

Technical Bulletin **TB 451 Issue 3**

Issued – 24/04/2023

Replacement of Connector Gas Elbow

Models affected

| | |
|------------------|---------------------|
| 444410131 | BEL GHU602GC Sta |
| 444410132 | BEL GTG60C Blk |
| 444410133 | BEL GHU75C Sta |
| 444410134 | BEL GTG75C Blk |
| 444410193 | ST GTG60C Blk |
| 444410443 | BEL GHU602C LPG Sta |
| 444410444 | BEL GTG600C LPG Blk |
| 444410446 | BEL GHU75C LPG Sta |
| 444410447 | BEL GTG75C LPG Blk |
| 444411638 | BEL GHU753RI STA |

Table 1 – Affected Products

Information

Belling have identified a potential issue with the **SILVER GAS INLET ELBOW CONNECTOR** on the gas hobs outlined in **Table 1**, when installed in holiday caravans, lodges, and park homes.

This elbow **must be** replaced, the location and type of elbow in question is shown in figure 1 below:

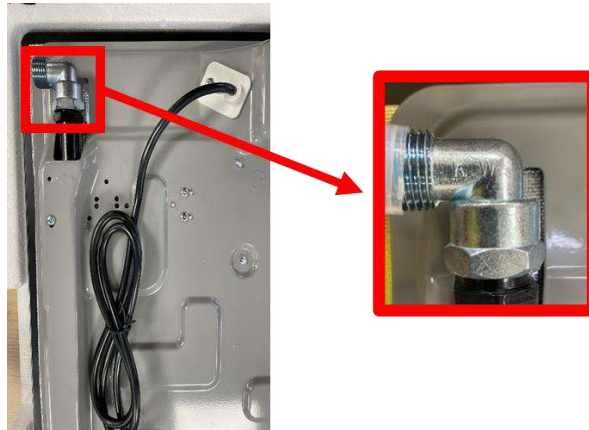


Figure 1 – Elbow and location on product

IMPORTANT - IF THE SILVER GAS INLET ELBOW CONNECTOR HAS ALREADY BEEN REPLACED WITH A BRASS CONNECTOR OR A STRAIGHT COUPLING, AND TESTED BY THE CARAVAN MANUFACTURER, NO MODIFICATION IS REQUIRED.

To eliminate this issue, **the silver gas connector** must be changed to a 1/2" BSP female and seal assembly, **End A**, as outlined in **figure 2** below. **End B** to suit installation. This can be either another elbow or a straight coupling, depending on pipe configuration.

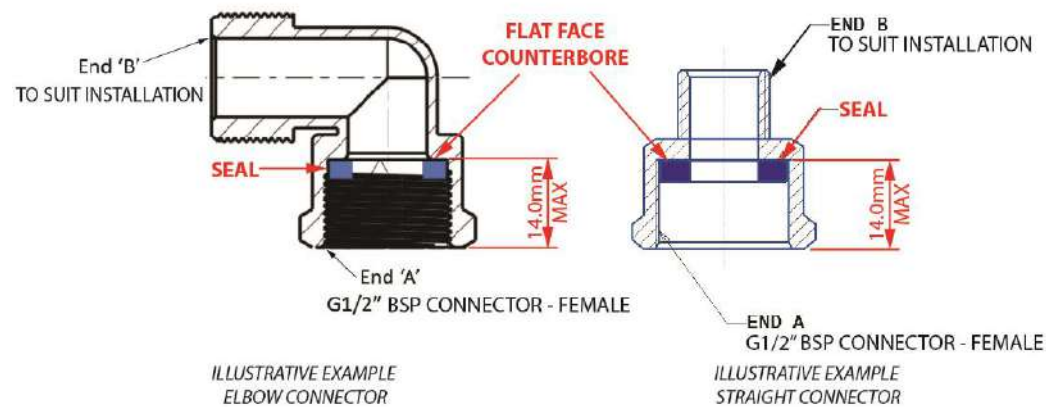


Figure 2 – Fitting connector examples

IMPORTANT

It is imperative to check the following characteristics are met for "END A".

- **Hob connector 1/2" BSP thread**
- **Flat counterbore on seal mount face (refer to Figure 2)**
- **14.0mm MAXIMUM counterbore depth**

ACTION:

IMPORTANT - All work must be carried out by a competent Gas Safe Registered Engineer.

IMPORTANT - IF THE SILVER GAS INLET ELBOW CONNECTOR HAS ALREADY BEEN REPLACED WITH A BRASS CONNECTOR OR A STRAIGHT COUPLING, AND TESTED BY THE CARAVAN MANUFACTURER, NO MODIFICATION IS REQUIRED.

To replace the fitting:

- Isolate gas supply.
- Disconnect hob from gas supply
- Remove **Silver Elbow** and replace with 1/2" BSP female and seal arrangement as outlined in figure 2 (End A).
- End B to suit installation; for example, 10.0mm or 15.0mm pipework installation. You may or may not have an integrated reducer.

IMPORTANT CARE POINT - Ensure fitting "End A" is fully sealed to hob and check there is an observable gap between fitting flange as shown in figure 3.

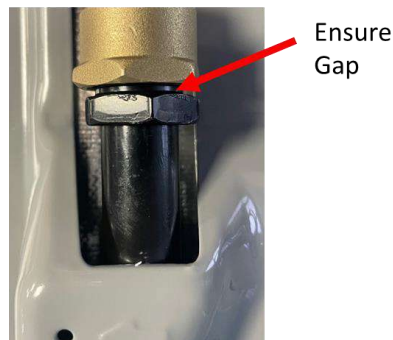


Figure 3 – Care Point "gap" illustration

- Reconnect to gas supply at end B
- Carry out tightness tests and recommission in accordance with Gas Safety Regulations.

Upon completion of remedial work, the following information from the caravan must be provided in your job report:

- Address details – Park name, site address, plot number
- Caravan make, model and serial number from caravan (example below)
- Gas Safe Engineer name and Gas Safe number
- Description of work carried out
- If unable to modify, reasons why – Isolate hob and contact Belling
- Identification letter of removed elbow connector (KW, C or R)
- Visible condition of elbow – Cracked or no visible damage
- Model and serial number of hob
- Any damaged elbows to be returned to Belling (Belling Engineers Only)

Example of holiday caravan serial number can be found in figure 4.



Figure 4 – Example of holiday caravan serial number
