



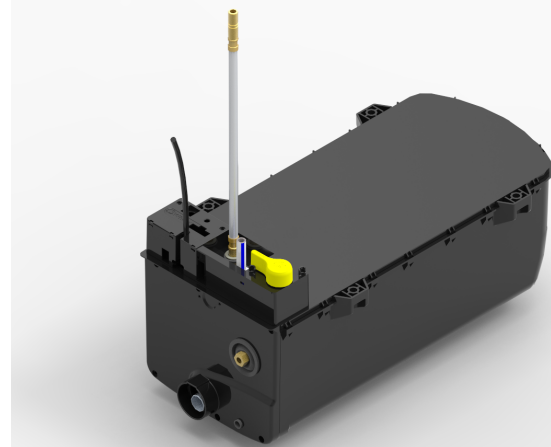
# Whale<sup>®</sup> EXPANSE<sup>™</sup>

## Fast Water Heat Up, Reheat and Retention

High efficiency pre-mixed burner and direct heat exchanger inside the tank provides Whale's fastest water heating ever

- 8 litre capacity water tank
- Robust design
- Gas and electric power options
- No cuts required in vehicle side wall
- External gas connections
- No gas drop out vents required

Feature		ExpansE Water Heater Gas and electric
Model	[-]	WW0801UC
Water Capacity	[l]	8
L x W x H	[mm]	522 x 262 x 180
Weight	[kg]	4.5
Cold/Hot Water Connection	[mm]	12mm pipe/12mm stem
Gas Type, Pressure	[mbar]	Butane/Propane, 30
Heat input	Gas [kW]	1.35
	Electric [kW]	0.75 / 1.50
Standby Loss	[W]	Electric – 25 W, G+E – 29 W, Gas – 43 W
DC Voltage	[V]	9.9 ≤ 12.0 ≤ 15.1
DC Current	Operation [A]	0.48
	Standby [A]	0.03
AC Power Supply		230 V, 50 Hz
Max Water Pressure	Supply [bar]	1.9
	Rated [bar]	3.0
Ingress Protection Rating		IP45
Max Water Temperature	[°C]	~70°C
Materials	Cylinder	Stainless steel 316L
	Housing	PP 20% GF for impact resistance
	Insulation	EPS
Certification		CE – GAR, LVD, EMC



### More for the manufacturer...



#### More Space

Installed under the vehicle to free up interior space



#### Less Weight

Compact and lightweight design at only 4.5kg



#### Design Freedom

Unique design gives vehicle manufacturers the freedom to choose from a variety of chassis locations



#### Connectivity

Compatible with the easy to use Whale Duo Control Panel

### More for the user...



#### Fast Heat Up and Reheat

Hot water for one shower in approx. 11 minutes or two showers in approx. 20 minutes\*



#### More Control

Heat water using gas, electric or both for hot water available when you need it



#### Winter Protection

Use your van all year round with our user activated frost mode



#### Heat Retention

Custom expanded polystyrene ensures that water stays hotter for longer

**Whale Support**  
Tel: 0345 9090 911  
info@whalepumps.com www.whalevanlife.com



©Copyright Whale 2018 - All rights reserved. Reproduction in whole or in part without permission is prohibited. WHALE® is a registered trademark of Munster Simms Engineering Limited, Bangor, Northern Ireland trading as Whale. Whale's policy is one of continuous improvement and we reserve the right to change specifications without prior notice. Illustrations are for guidance purposes only. Neither the accuracy nor completeness of the information contained in this or any product literature is guaranteed by the Company and may be subject to change at its sole discretion.

\*Based on gas and electric setting, Whale laboratory Whale shower test 2015 (8L from approx. 15 °C to approx. 70 °C) Times in different installations may vary.

ref: hm\_ps\_expansE\_v1\_0918